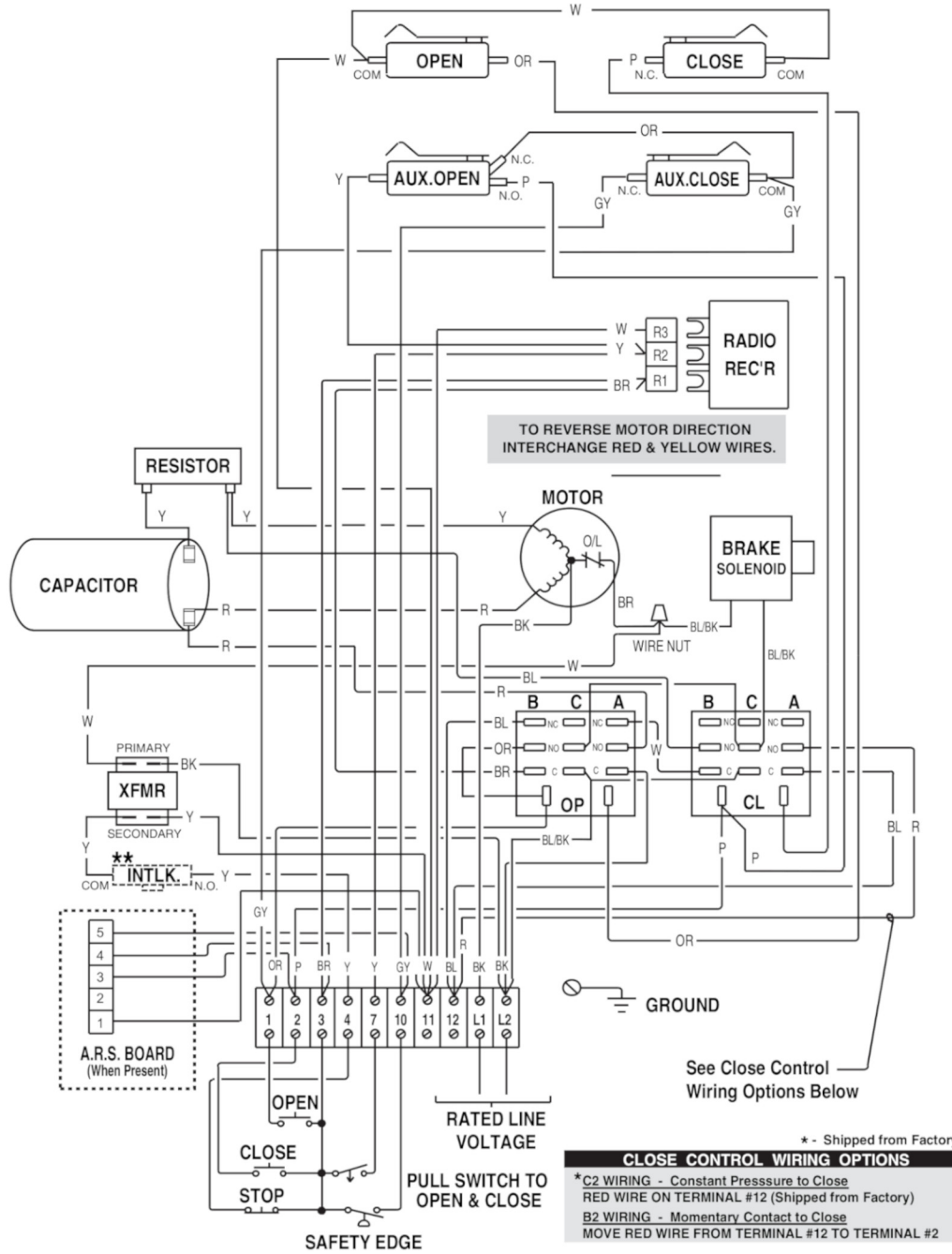




»» DIAGRAMA ELECTRICO PARA OPERADOR SEMI INDUSTRIAL COMERCIAL MARCA LIFTMASTER MOD. MH5011 / BMT5011.



* - Shipped from Factory
CLOSE CONTROL WIRING OPTIONS
 *C2 WIRING - Constant Pressure to Close
 RED WIRE ON TERMINAL #12 (Shipped from Factory)
 B2 WIRING - Momentary Contact to Close
 MOVE RED WIRE FROM TERMINAL #12 TO TERMINAL #2

** - INTERLOCK SWITCH (WHEN SUPPLIED)
 WIRED N.O. HELD CLOSED.

CÓDIGO	SKU	MODELO	DESCRIPCIÓN
LM-00706-00	LM-00146-00	MH5011U-L	OPERADOR IND .5HP 110V MOD.MH5011U-L
LM-00711-00	LM-00146-00	BMT5011U-L	OPERADOR IND .5HP 110V MOD.BMT5011U-L



Versión Digital.

(229) 461-7028

portonesautomaticos@adsver.com.mx
 portonesautomaticos@prodigy.net.mx



V12.21